

smart **X-ray** · smart **AXI** · smart **3D CT**

TECHVALLEY co.,ltd.

▪ Inquire +82-31-730-0825 / [www.techvalley.co.kr](http://www.techvalley.co.kr)

*We Make It Visible*

***TECHVALLEY***





## Company Introduction

### Summary

<b>Name</b>	Techvalley Co.,Ltd.	<b>Establishment</b>	May. 1st 1997
<b>President</b>	KIM HAN SEOK	<b>Business</b>	Manufacture of X-Ray inspection and measuring equipments
<b>Patent</b>	A total of 85 patents related to X-ray technology have been officially registered or are currently under application		
<b>Awards</b>	<ul style="list-style-type: none"> <li>· Awarded the ESG Shared Value Enterprise Award</li> <li>· Awarded by the Minister of Science and ICT</li> <li>· Prize awarded \$10Million Export Tower on the 60<sup>th</sup> Trade Day (President, 2023)</li> <li>· Prize awarded \$7Million Export Tower on the 59<sup>th</sup> Trade Day (President, 2022)</li> <li>· Prize awarded \$5Million Export Tower on the 56<sup>th</sup> Trade Day (President, 2019)</li> <li>· Prize awarded \$3Million Export Tower on the 54<sup>th</sup> Trade Day (President, 2017)</li> <li>· Prize awarded \$1Million Export Tower on the 52<sup>nd</sup> Trade Day (President, 2015)</li> <li>· Prize awards (Minister of Knowledge Economy, 2012)</li> <li>· Awarded by Minister of Commerce Industry and Energy (2007)</li> <li>· Awarded by Minister of Science and Technology (2005)</li> <li>· Prize awards (Minister of Science and Technology, 2002)</li> <li>· Silver awards (International Invention Competition Geneva in 2001)</li> </ul>		
<b>Certificate</b>	<ul style="list-style-type: none"> <li>· Selected as a World-Class Product Certified Company by the Ministry of Trade, Industry and Energy</li> <li>· Selected as an Excellent Employment Company in Gyeonggi Province</li> <li>· Designated as an Advanced Technology Center (ATC)</li> <li>· Achieve the 'Bronze' Medal from Ecovadis</li> <li>· Certification of KOLAS accredited testing agency</li> <li>· Certificate of Designation Small Giant Company (Ministry of SMEs &amp; Startups)</li> <li>· Certificated ISO45001</li> <li>· Certificated CE on all the products</li> <li>· Certificated ISO14001:2015</li> <li>· Certificated ISO9001:2000</li> <li>· Certificated KSA9001:2001</li> </ul>		
<b>Location</b>	<ul style="list-style-type: none"> <li>· <b>HQ</b> A-506 Keumkang Penterium IT Tower, 215, Galmachi-ro, Jungwon-gu, Seongnam-si, Gyeonggi-do, South Korea</li> <li>· <b>R&amp;D Center</b> A-509 Keumkang Penterium IT Tower, 215, Galmachi-ro, Jungwon-gu, Seongnam-si, Gyeonggi-do, South Korea</li> <li>· <b>KARAD</b> A-B314 Keumkang Penterium IT Tower, 215, Galmachi-ro, Jungwon-gu, Seongnam-si, Gyeonggi-do, South Korea</li> <li>· <b>Factory 1</b> 33, Jikdong-ro, Gwanju-si, Gyunggi-do, South Korea</li> <li>· <b>Factory 2</b> 71-17, Jikdong-ro, Gwanju-si, Gyunggi-do, South Korea</li> <li>· <b>上海太科威利检测设备有限公司</b> 上海市嘉定区沪宜公路1188号 27幢2层 213</li> <li>· <b>VINA Business Division</b> Au Co Street, Kinh Bac Ward, Bac Ninh City, Bac Ninh Province, Vietnam</li> </ul> <p><b>Inquire +82-31-730-0825 / www.techvalley.co.kr</b></p>		

### Company History

<b>2023 ~ 2024</b>	<ul style="list-style-type: none"> <li>· Awarded the ESG Shared Value Enterprise Award</li> <li>· Selected as a World-Class Product Certified Company by the Ministry of Trade, Industry and Energy</li> <li>· Prize awarded \$10Million Export Tower on the 60<sup>th</sup> Trade Day (President)</li> <li>· Awarded by the Minister of Science and ICT</li> </ul>	<ul style="list-style-type: none"> <li>· Korea Advanced Radiography Analysis Division (KARAD) Opened</li> <li>· Selected as an Excellent Employment Company in Gyeonggi Province</li> <li>· Achieve the 'Bronze' Medal from Ecovadis</li> <li>· Designated as an Advanced Technology Center (ATC)</li> </ul>
<b>2021 ~ 2022</b>	<ul style="list-style-type: none"> <li>· Prize awarded \$7Million Export Tower on the 59<sup>th</sup> Trade Day (President)</li> <li>· Certification of KOLAS accredited testing agency</li> </ul>	<ul style="list-style-type: none"> <li>· Certificate of Designation Small Giant Company (Ministry of SMEs &amp; Startups)</li> <li>· ISO 45001 (Safety and Health Management System) Certification</li> </ul>
<b>2019 ~ 2020</b>	<ul style="list-style-type: none"> <li>· ISO 14001 (Environmental Management System) Certification</li> <li>· Selected as a Promising Export SME by the Ministry of SMEs and Startups</li> </ul>	<ul style="list-style-type: none"> <li>· Selected as a Top Product of the First Half of 2019 (Electronic News)</li> <li>· Prize awarded \$5Million Export Tower on the 56<sup>th</sup> Trade Day (President)</li> </ul>
<b>2017 ~ 2018</b>	<ul style="list-style-type: none"> <li>· Vietnam's representative office opened</li> <li>· Prize awarded \$3Million Export Tower on the 54<sup>th</sup> Trade Day (President)</li> </ul>	<ul style="list-style-type: none"> <li>· Selected Star-product 2017 (28<sup>th</sup> June by Electronic News)</li> </ul>
<b>2015 ~ 2016</b>	<ul style="list-style-type: none"> <li>· In-line AXI/2.5D developed</li> <li>· Prize awarded \$1Million Export Tower on the 52<sup>nd</sup> Trade Day (President)</li> </ul>	<ul style="list-style-type: none"> <li>· Selected as a military service company (Military Manpower Administration)</li> </ul>
<b>2013 ~ 2014</b>	<ul style="list-style-type: none"> <li>· In-line AXI developed</li> <li>· Selected for the IBK Changgong startup program and formally commended for outstanding performance</li> </ul>	<ul style="list-style-type: none"> <li>· Selected as a promising export SME (Ministry of SMEs &amp; Startups in Korea)</li> <li>· X-ray chip counter developed (1<sup>st</sup> in the World)</li> <li>· Commendation of excellent company by Hanwha</li> </ul>
<b>2011 ~ 2012</b>	<ul style="list-style-type: none"> <li>· Prize awards (Minister of Knowledge Economy)</li> <li>· X-ray diffractometry system (XRD) developed (1<sup>st</sup> in Korea)</li> <li>· X-ray CT system for internal measurement developed (1<sup>st</sup> in Korea)</li> </ul>	<ul style="list-style-type: none"> <li>· X-ray system(PDX) for dental clinic developed (1<sup>st</sup> in Korea)</li> <li>· Small-Angle X-ray Scattering (SAXS) developed (1<sup>st</sup> in Korea)</li> </ul>
<b>1997 ~ 2010</b>	<ul style="list-style-type: none"> <li>· Digital X-ray CT system for geological inspection (1<sup>st</sup> in Korea)</li> <li>· Achieves sales of 400 equipment units (The 1<sup>st</sup> accomplishment in Korea)</li> <li>· The 240kV 3D CT system has been CE certified, meeting European safety and quality standards</li> <li>· Certificated ISO9001:2000</li> <li>· Certificated KSA9001:2001</li> <li>· Automated X-ray inspection system for steel pipe (1<sup>st</sup> in Korea)</li> <li>· Received the Minister of Trade, Industry and Energy's Award in recognition of outstanding achievement</li> <li>· 160kV X-ray source developed (1<sup>st</sup> in Korea)</li> </ul>	<ul style="list-style-type: none"> <li>· Industrial X-ray equipment developed (1<sup>st</sup> in Korea)</li> <li>· Prize awards (Minister of science &amp; technology)</li> <li>· Silver awards (International invention competition Geneva in 2001)</li> <li>· Digital X-ray inspection system for relics (1<sup>st</sup> in Korea)</li> <li>· Digital X-ray inspection system for eccentricity of PCB hole (1<sup>st</sup> in Korea)</li> <li>· Grand prize of LA Int'n invention fair in USA</li> <li>· Silver prize of Korea invention fair (Korean Intellectual Property Office)</li> <li>· Portable X-ray equipment (1st in the World)</li> <li>· Established ('97.5.1)</li> </ul>

# Key Equipment

## AXI 2D series

- HAWKEYE9020 AXI (W) 1,392mm X (D) 2,105mm X (H) 1,529mm / 2,660kg
- HAWKEYE9000L (W) 2,070 mm X (D) 2,650mm X (H) 1,940mm / 2,900kg



## AXI 3D series

- HAWKEYE9600 AXI (W) 1,392mm X (D) 1,897mm X (H) 1,529mm / 3,240kg
- HAWKEYE9700 AXI (W) 1,670mm X (D) 2,124mm X (H) 2,255mm / 3,760kg
- HAWKEYE9700 XL (W) 1,920mm X (D) 2,130mm X (H) 2,870mm / 6,000kg



## 2D MXI series

- TVX-IMT9000F (W) 1,372mm X (D) 1,534mm X (H) 1,623mm / 1,600kg
- TVX-IMT1300F (W) 1,372mm X (D) 1,534mm X (H) 1,623mm / 1,810kg
- ARIRANG 1000 (W) 1,699mm X (D) 2,016mm X (H) 2,131mm / 1,680kg



## 3D MXI series

- ARIRANG 130CT (W) 1,787mm X (D) 2,434mm X (H) 1,844mm / 2,500kg
- ARIRANG 135CT (W) 1,829mm X (D) 2,534mm X (H) 1,900mm / 2,800kg
- ARIRANG 165CT (W) 1,829mm X (D) 2,534mm X (H) 1,900mm / 3,850kg



## TERATORN series

- TERATORN 5 (W) 1,787mm X (D) 2,434mm X (H) 1,844mm / 3,500kg
- TERATORN 7 (W) 1,787mm X (D) 2,434mm X (H) 1,844mm / 3,500kg



## TVX-IMT series (Open tube)

- TVX-IMT160CT (W) 2,600mm X (D) 1,650mm X (H) 2,150mm / 4,000kg
- TVX-IMT225CT (W) 2,250mm X (D) 1,800mm X (H) 2,250mm / 5,700kg
- TVX-IMT300CT (W) 3,000mm X (D) 2,100mm X (H) 2,790mm / 11,000kg



## TVX-IL series (Closed tube)

- ARIRANG 160CT (W) 2,465mm X (D) 1,866mm X (H) 1,772mm / 2,400kg
- TVX-IL2205CT (W) 2,250mm X (D) 1,800mm X (H) 2,250mm / 8,000kg
- TVX-IL3205CT (W) 2,800mm X (D) 2,000mm X (H) 2,200mm / 9,500kg



## Chip counter

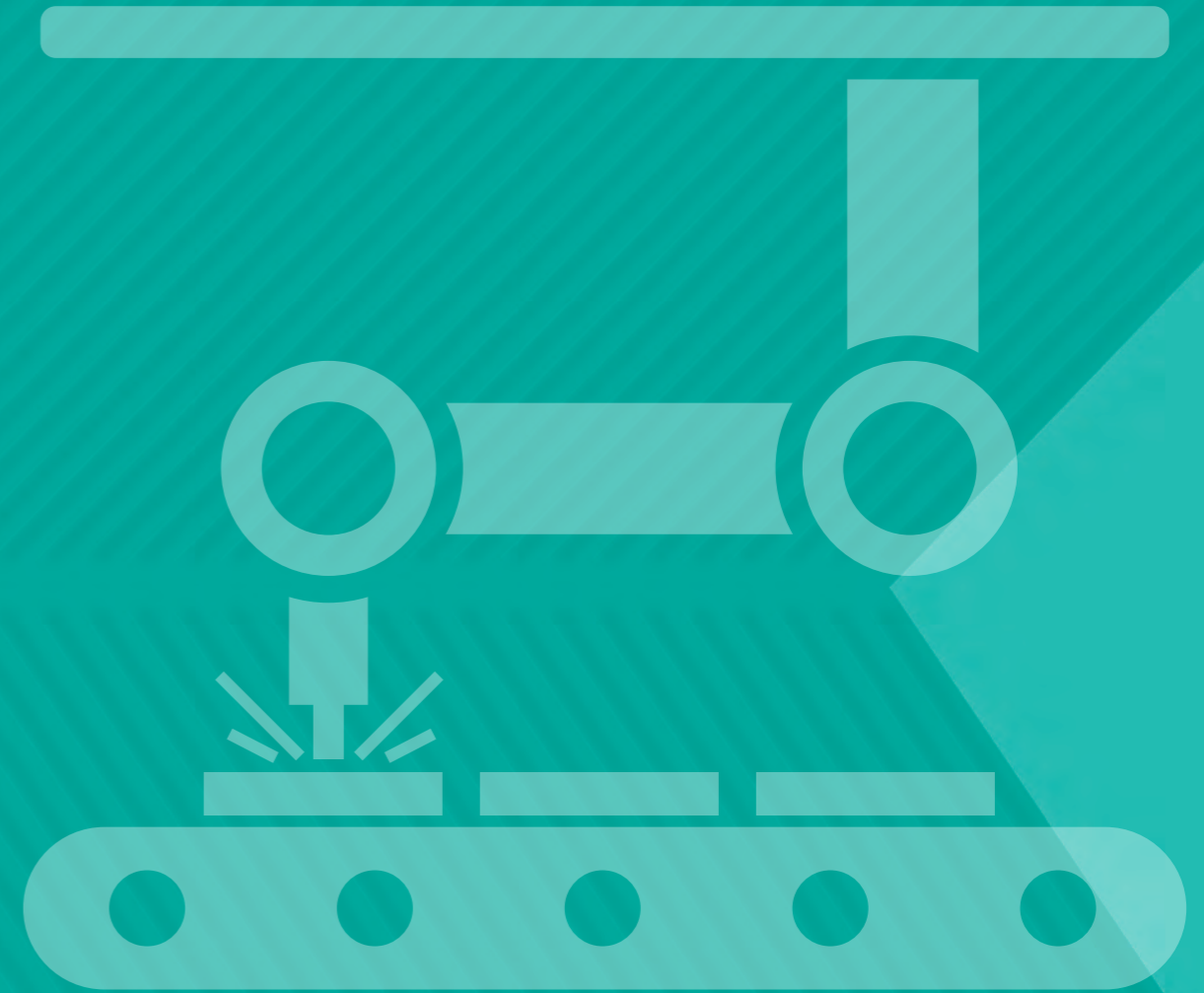
- HAWKEYE 2000 (W) 900mm X (D) 1,481mm X (H) 1,947mm / 580kg



# 1 SMT EMS

Surface  
Mount  
Technology

Electronic  
Manufacturing  
Services

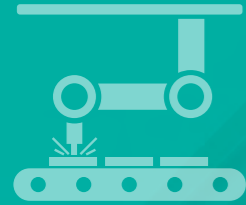


**AXI 2D series** HAWKEYE9020 AXI  
HAWKEYE9000L

**2D MXI series** TVX-IM9000F  
TVX-IM1300F  
ARIRANG1000

**AXI 3D series** HAWKEYE9600 AXI  
HAWKEYE9700 AXI  
HAWKEYE9700 XL

**3D MXI series** ARIRANG 130CT  
ARIRANG 135CT  
ARIRANG 165CT



# SMT / EMS



HAWKEYE9020 AXI

HAWKEYE9000L

## SMT AXI 2D series

### Equipment

HAWKEYE9020 AXI

HAWKEYE9000L

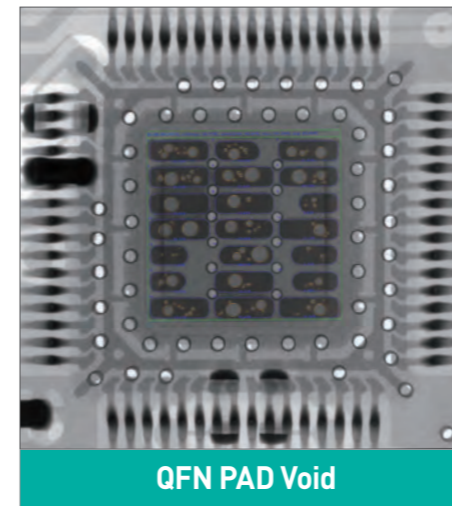
Offering the most accurate and fastest 2D inspection solution in the industry

- AI-powered solution dramatically reduces false defect rates
- Industry-leading inspection speed with a tact time of 0.4 seconds per field of view
- Flexible coverage that adapts to product sizes of all types
- Customized automated inspection algorithms tailored for diverse products

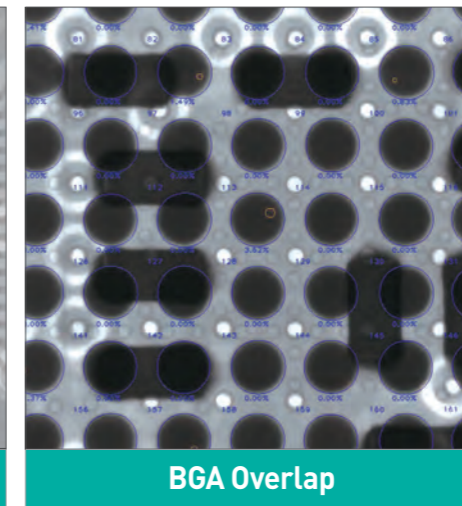
### Specification

Equipment	HAWKEYE9020 AXI	HAWKEYE9000L
X-ray source	110kV / 25W / 2.5 $\mu$ m Resolution	110kV / 25W / 2.5 $\mu$ m Resolution
Detector	Active Area	150mm X 150mm
	Resolution	4.2MP
	Pixel pitch	73 $\mu$ m
Inspection Area	2D : 380mm X 380mm / Slice : 250mm X 250mm	1,200mm X 500mm
X-ray Safety	1uSv / h	
Dimension (W X D X H, mm)	1,392 X 2,105 X 1,529	2,070 X 2,650 X 1,940
Weight (kg)	2,660	2,900

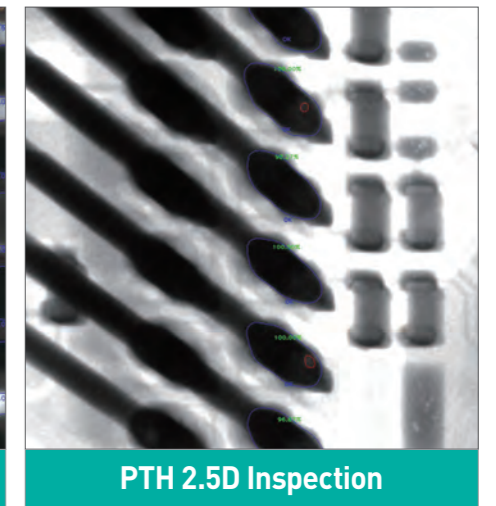
### Sample Images



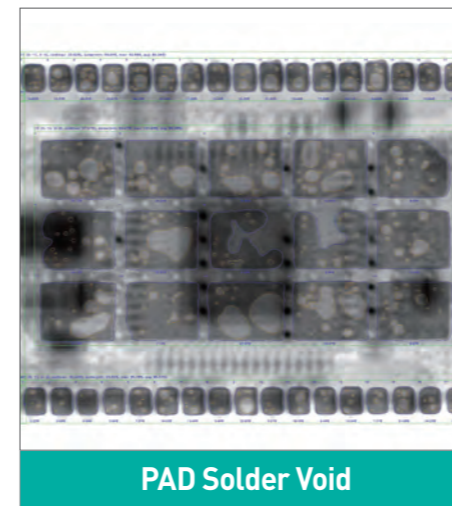
QFN PAD Void



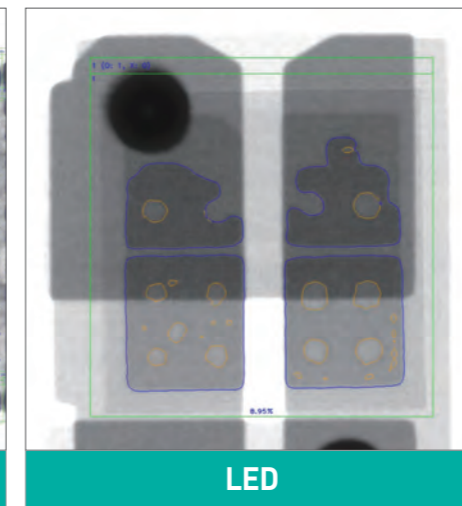
BGA Overlap



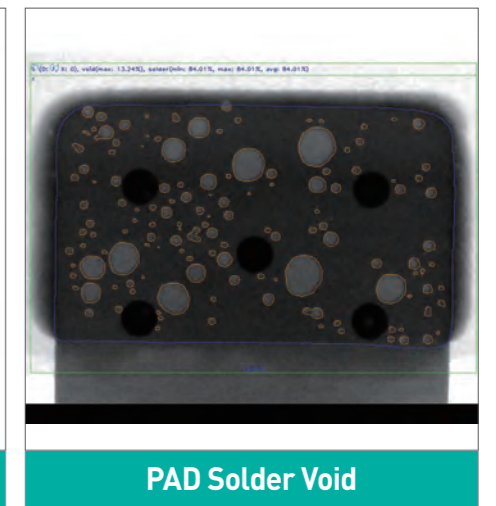
PTH 2.5D Inspection



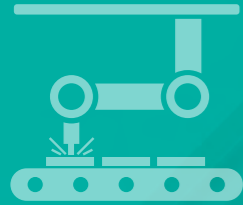
PAD Solder Void



LED



PAD Solder Void



# SMT / EMS



HAWKEYE9600 AXI    HAWKEYE9700 AXI    HAWKEYE9700 XL

## SMT AXI 3D series

### Equipment

- HAWKEYE9600 AXI
- HAWKEYE9700 AXI
- HAWKEYE9700 XL

### Revolutionizing Quality Inspection, Maximizing Production Efficiency

- Ultra-fast 3D inspection within 3 seconds – industry-leading tact time
- 3D volume-based inspection accurately detects various defects such as solder issues, voids, and pins
- Inline CT equipment enabling both automated inspection and verification
- MES/SPC integration for real-time production data tracking

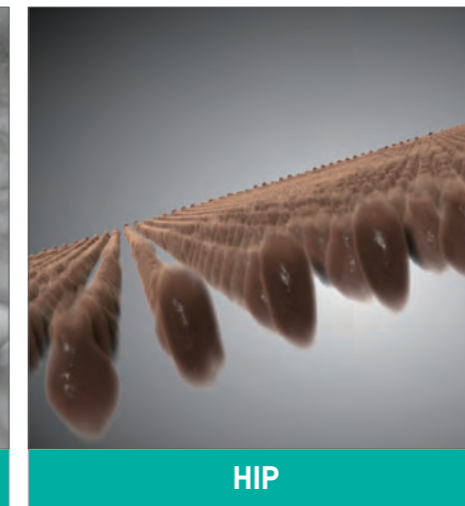
### Specification

Equipment	HAWKEYE9600 AXI	HAWKEYE9700 AXI	HAWKEYE9700 XL
X-ray source	130kV / 39W / 2.5 $\mu$ m Resolution (Optional - 150kV / 75W / 2.5 $\mu$ m Resolution)		
Detector	Active Area	150mm X 150mm	
	Resolution	4.2MP	
	Pixel pitch	73 $\mu$ m	
Inspection Area	2D : 400mm X 400mm 3D : 400mm X 380mm	2D : 600mm X 400mm 3D : 600mm X 380mm	2D : 700mm X 700mm 3D : 700mm X 700mm
X-ray Safety	1uSv / h		
Dimension (W X D X H, mm)	1,392 X 1,897 X 1,529	1,670 X 2,124 X 2,255	1,920 x 2,130 x 2,870
Weight (kg)	3,240	3,760	6,000

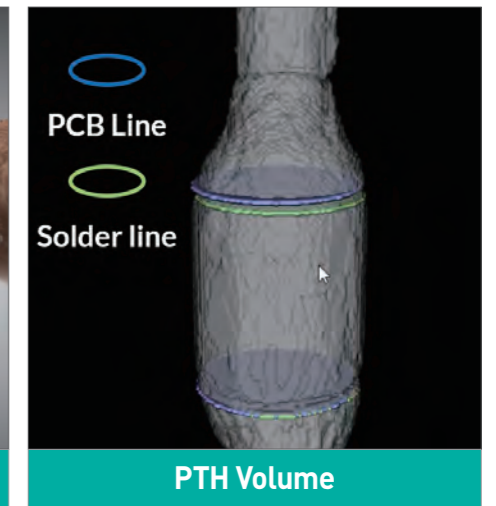
### Sample Images



HIP



HIP



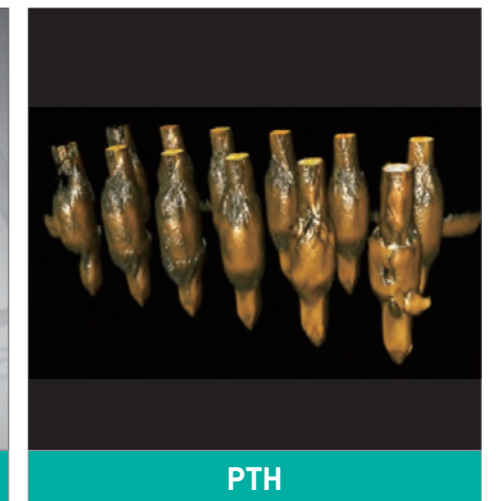
PTH Volume



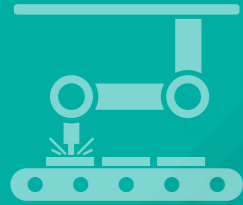
BGA Voume



PTH\_Unfilled



PTH



# SMT / EMS



TVX-IM9000F

TVX-IM1300F

ARIRANG 1000

## SMT 2D MXI series

### Equipment

TVX-IM9000F  
TVX-IM1300F  
ARIRANG 1000

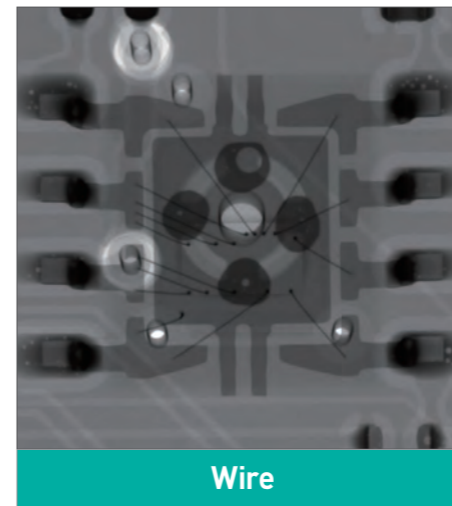
### User-friendly and intuitive manual X-ray inspection equipment

- 2D X-ray system capable of inspecting various defects
- High-resolution image quality
- Equipped with intelligent algorithms for automated inspection
- Supports manual mode, macro mode, and automatic inspection mode

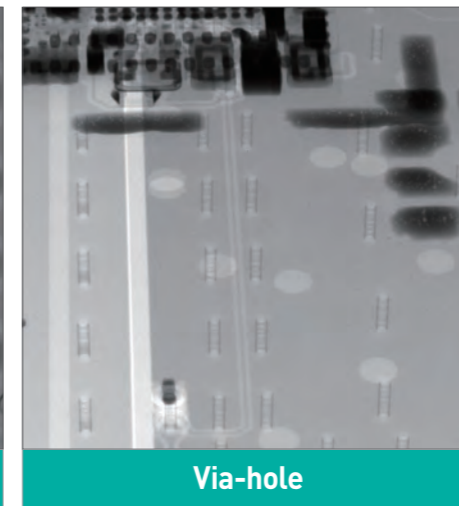
### Specification

Equipment	TVX-IM9000F	TVX-IM1300F	ARIRANG 1000
X-ray source	110kV / 25W / 2.5μm Resolution	130kV / 40W / 2.5μm Resolution	100kV / 20W / 2.5μm Resolution
Detector	Active Area	150mm X 150mm	116.5mm X 143.7mm
	Resolution	4.2MP	4.2MP
	Pixel pitch	73μm	73μm
Inspection Area	480mm X 480mm	480mm X 480mm	480mm X 480mm
X-ray Safety	1uSv / h		
Dimension (W X D X H, mm)	1,372 X 1,534 X 1,623	1,372 X 1,534 X 1,623	1,699 X 2,016 X 2,131
Weight (kg)	1,600	1,810	1,680

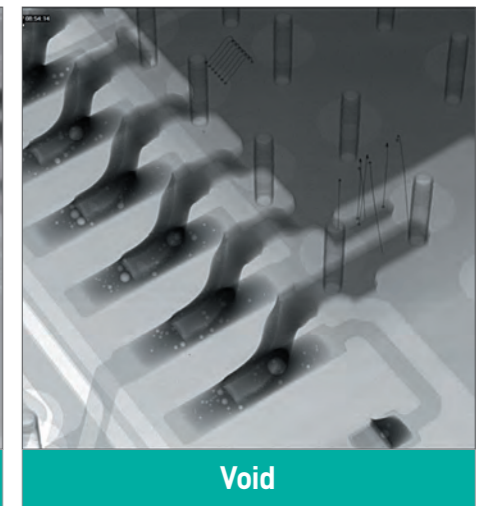
### Sample Images



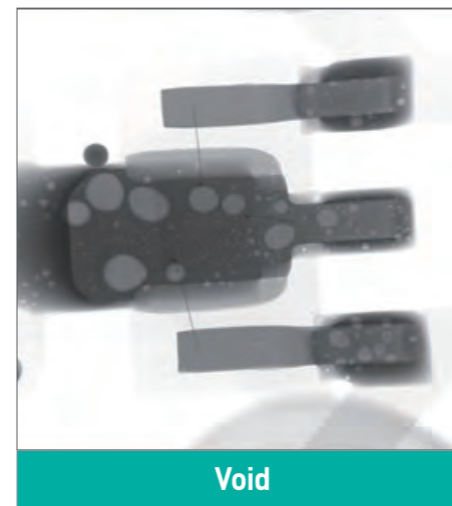
Wire



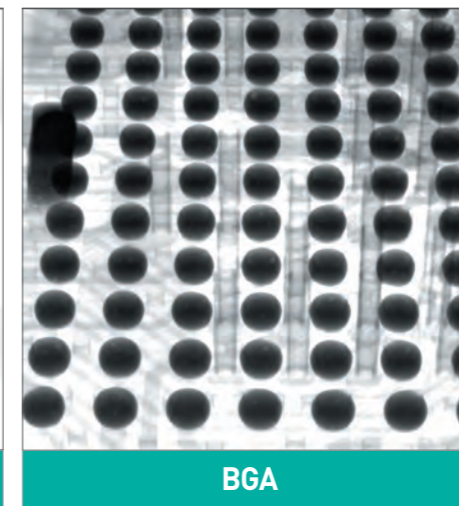
Via-hole



Void



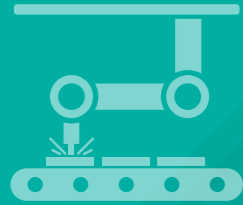
Void



BGA



PTH



# SMT / EMS



## SMT 3D MXI series

### Equipment

- ARIRANG 130CT
- ARIRANG 135CT
- ARIRANG 165CT

### High-performance 3D In-line CT with an all-in-one solution

- Supports all-in-one (2D & 3D viewer) functionality
- One-click 3D CT scanning
- Enables both manual and automatic inspection
- Provides high-resolution images and a variety of image filters

### Specification

Equipment	ARIRANG 130CT	ARIRANG 135CT	ARIRANG 165CT
X-ray source	130kV / 40W / 2.5 $\mu$ m Resolution		160kV / 25W / 0.4 $\mu$ m Resolution
Detector	Active Area	150mm X 150mm	150mm X 150mm
	Resolution	4.2MP	4.2MP
	Pixel pitch	73 $\mu$ m	73 $\mu$ m
Inspection Area	2D : 440mm X 340mm	2D : 480mm X 480mm	2D : 480mm X 480mm
	3D : 320 mm X 200mm	3D : 320mm X 240mm	3D : 320mm X 240mm
X-ray Safety	1 $\mu$ Sv / h		
Dimension (W X D X H, mm)	1,787 X 2,434 X 1,844	1,829 X 2,534 X 1,900	1,829 X 2,534 X 1,900
Weight (kg)	2,500	2,800	3,850

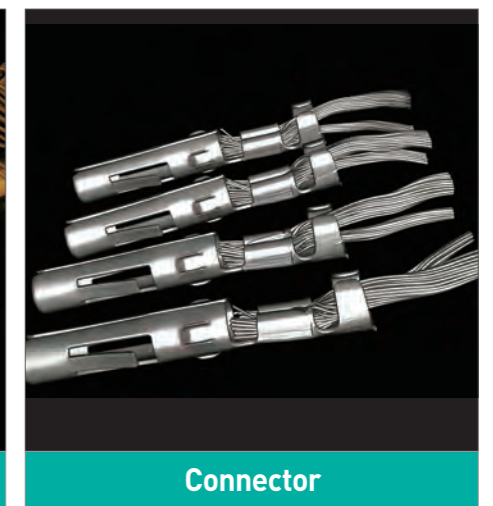
### Sample Images



PTH Volume



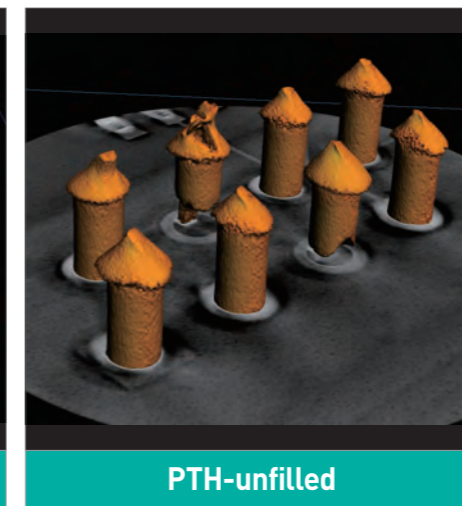
BGA & Wire



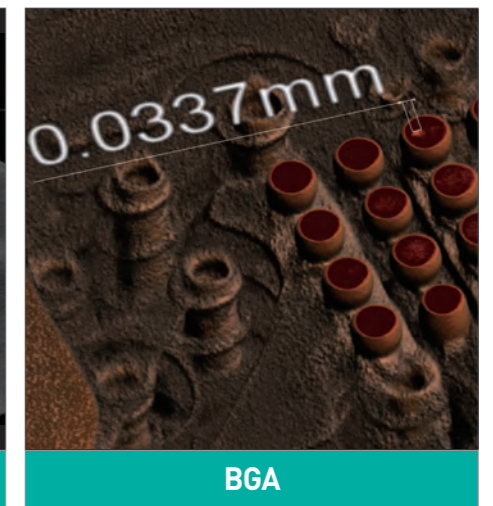
Connector



PTH

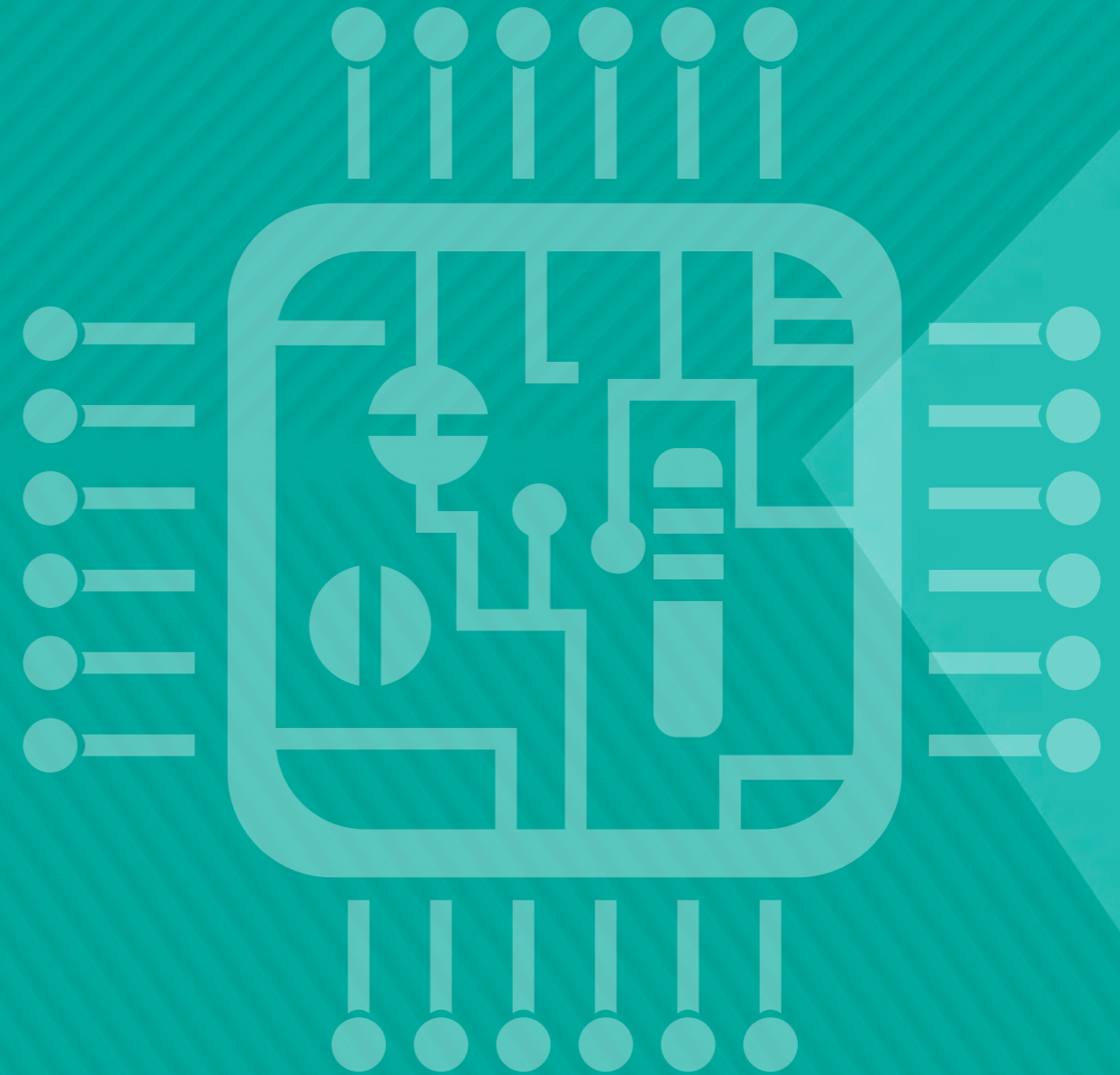


PTH-unfilled



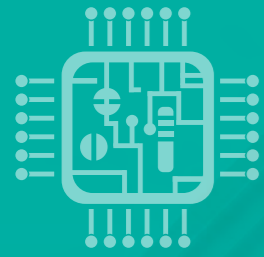
BGA

# Semi conductor



TERATORN series

TERATORN 5  
TERATORN 7



# Semiconductor



## Semiconductor **TERATORN** series

### Equipment

TERATORN 5  
TERATORN 7

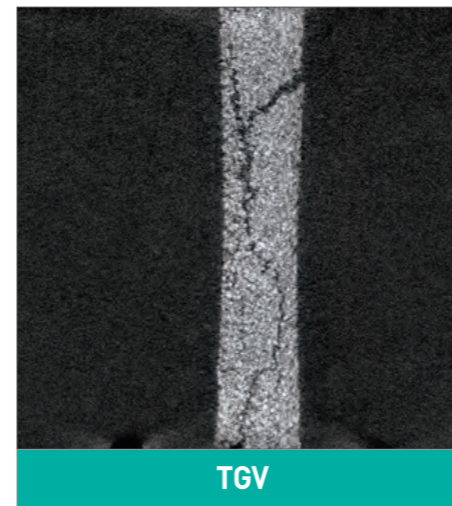
Setting the standard for next-generation 3D CT with high resolution, speed, and flexibility

- Implement of true nanometer resolution – capable of detecting ultra-fine defects such as BGA, HIP, and cracks
- Integrated 2D/3D view with AI sampling inspection – maximizing quality reliability
- Built-in high-speed scanning and high-quality filters – flexibly applicable to a variety of components
- Unlimited adaptability to materials and shapes

### Specification

Equipment	TERATORN 5	TERATORN 7
X-ray source	160kV / 64W / 0.9 $\mu$ m Resolution (Jima Resolution)	160kV / 16.6W / 0.5 $\mu$ m Resolution (Jima Resolution)
Detector	Active Area	150mm X 150mm
	Resolution	4.2MP
	Pixel pitch	73 $\mu$ m
Inspection Area	520 x 520mm (2D & 3D)	
X-ray Safety	1 $\mu$ Sv/h	
Dimension (W X D X H, mm)	1,787 X 2,434 X 1,844	
Weight (kg)	3,500	

### Sample Images



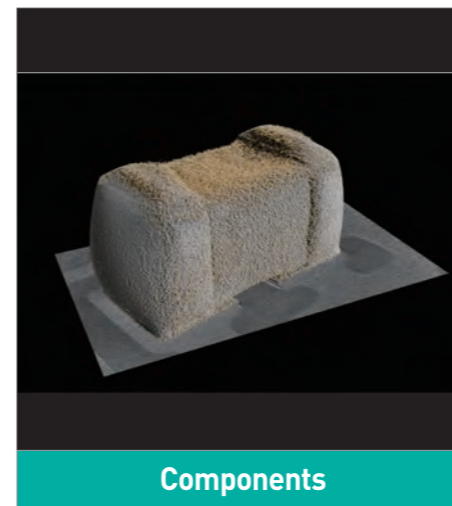
TGV



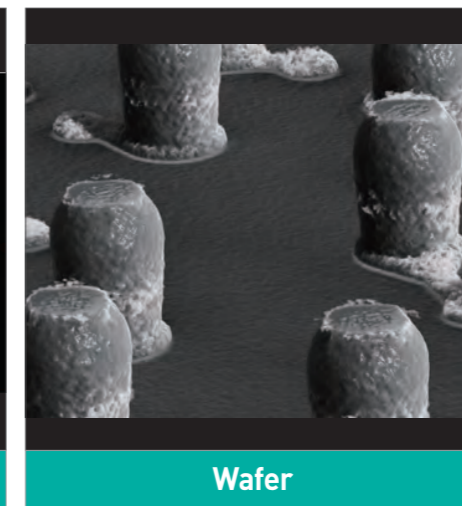
BGA



MLCC



Components

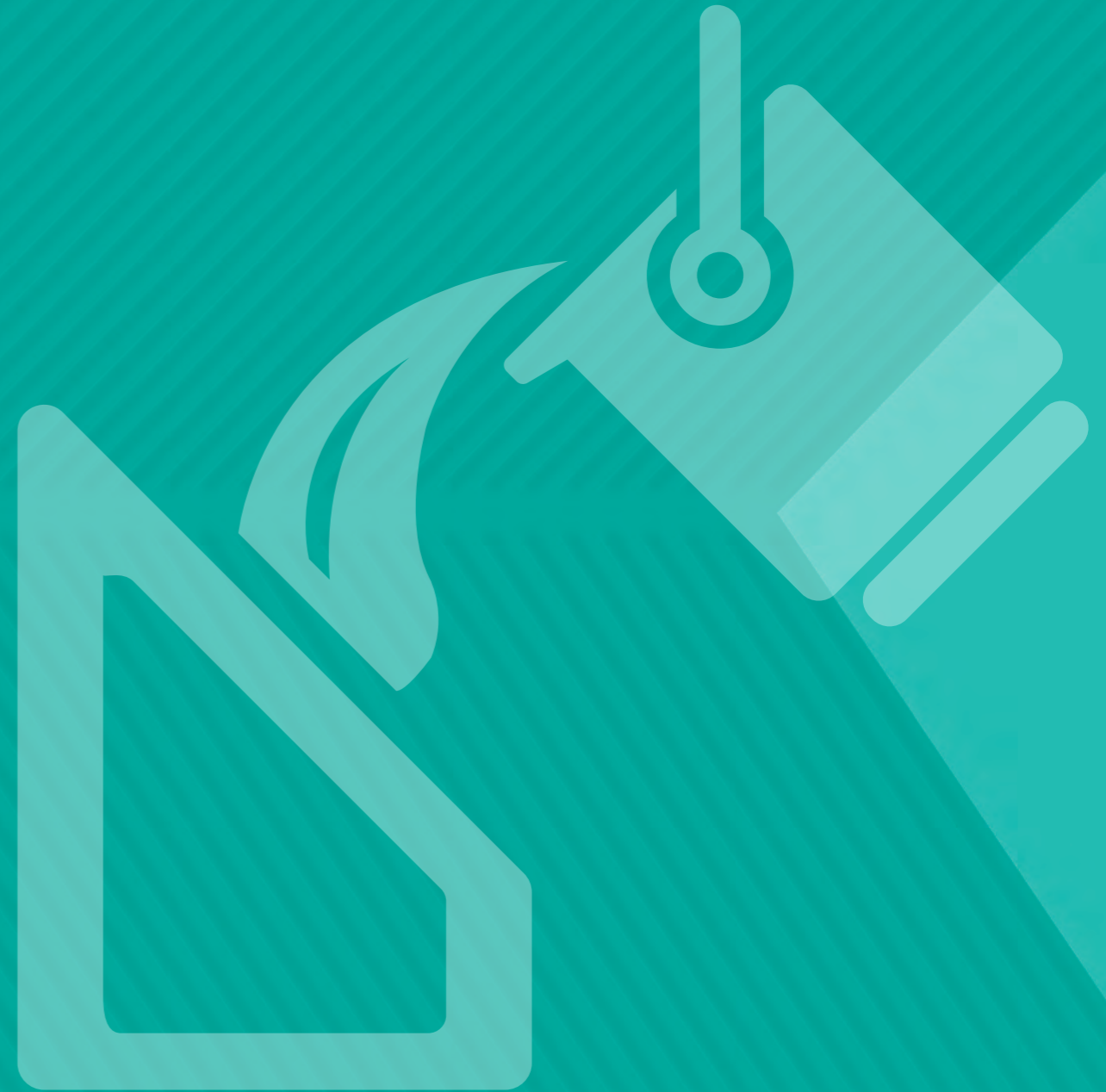


Wafer



Wire

# Diecasting



**TVX-IMT series** TVX-IMT160CT  
TVX-IMT225CT  
TVX-IMT300CT

**TVX-IL series** ARIRANG 160CT  
TVX-IL2205CT  
TVX-IL3205CT



# Diecasting



TVX-IMT160CT

TVX-IMT225CT

TVX-IMT300CT

## Diecasting TVX-**IMT** series (Open tube)

### Equipment

- TVX-IMT160CT
- TVX-IMT225CT
- TVX-IMT300CT

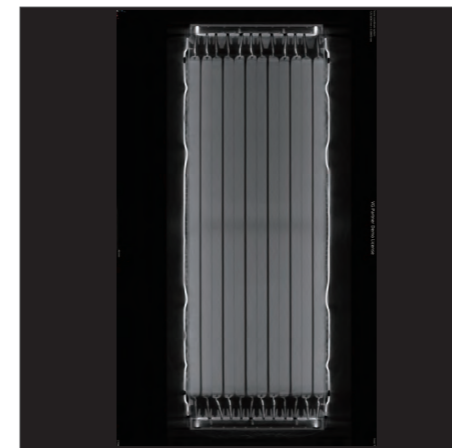
### Multi-talented & Convenient X-ray 3D CT

- Equipped with a proprietary multi-scan function for large samples
- Available in various models to flexibly accommodate sample dimensions and penetration requirements
- Fully automated axis alignment and X-ray beam calibration to ensure consistent equipment performance
- Supports customization, such as special configurations with dual X-ray tubes

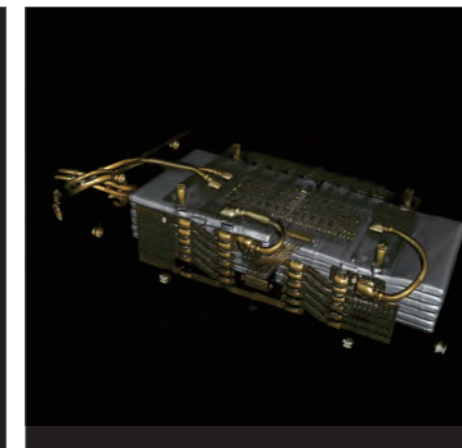
### Specification

Equipment	TVX-IMT160CT	TVX-IMT225CT	TVX-IMT300CT
X-ray source	160kV / 300W / 2 $\mu$ m Resolution	225kV / 300W / 2 $\mu$ m Resolution	300kV / 600W / 3 $\mu$ m Resolution (Optional - 190kV / 190W / 0.5 $\mu$ m Resolution)
Detector	Active Area	430mm X 430mm	430mm X 430mm
	Resolution	9.4MP	9.4MP
	Pixel pitch	140 $\mu$ m	140 $\mu$ m
Inspection Area	2D : 300mm X 300mm	2D : 300mm X 400mm	2D : 600mm X 800mm
	3D : 300mm X 300mm	3D : 300mm X 300mm	3D : 420mm X 400mm
X-ray Safety	1uSv/h		
Dimension (W X D X H, mm)	2,600 X 1,650 X 2,150	2,250 X 1,800 X 2,250	3,000 X 2,100 X 2,790
Weight (kg)	4,000	5,700	11,000

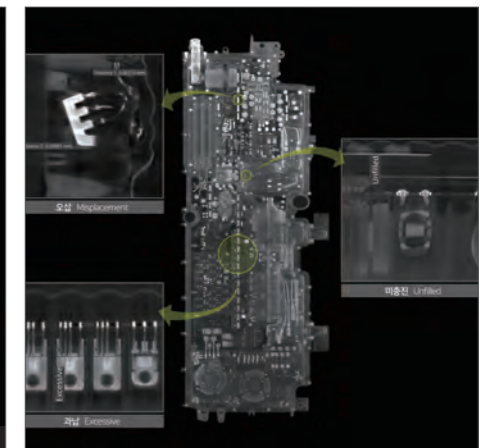
### Sample Images



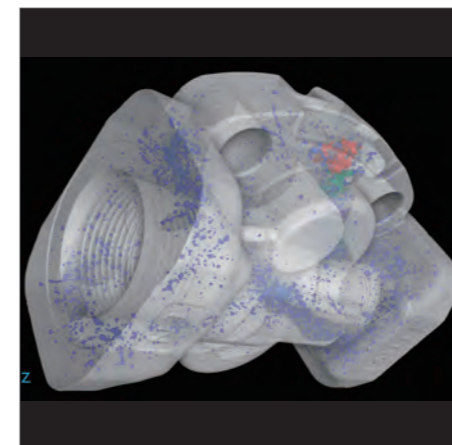
Battery



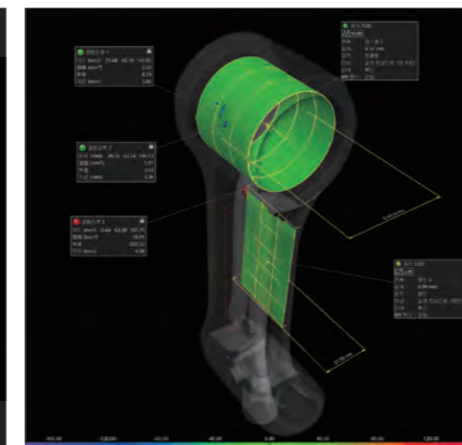
Battery Pack



Battery Management System



Al-casting



Casting-arm



Connector



# Diecasting



ARIRANG 160CT

TVX-IL2205CT

TVX-IL3205CT

## Diecastings TVX-IL series (Closed tube)

### Equipment

ARIRANG 160CT

TVX-IL2205CT

TVX-IL3205CT

**Large-scale 3D CT system with one-click operation, completing scans within 60 seconds**

- 225~320kV high-power X-ray source – capable of fully penetrating high-density/thick metal components
- One-click CT scanning with CAD comparison analysis tools – enabling quantitative dimension change detection
- Automated 3D reconstruction and multi-layer structural analysis – suitable for die-casting parts and large sample inspection
- Inspection time reduced by up to 50% compared to traditional equipment

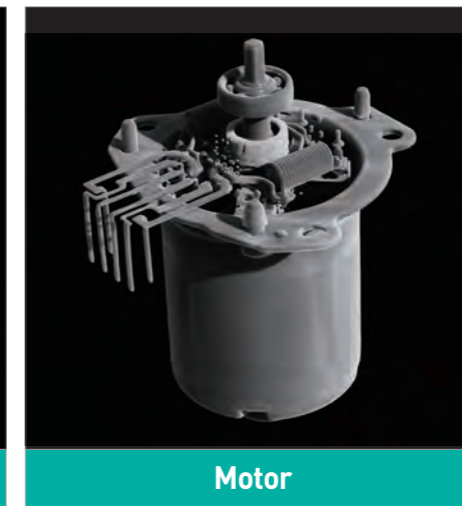
### Specification

Equipment	ARIRANG 160CT	TVX-IL2205CT	TVX-IL3205CT
X-ray source	160kV / 400W / 200μm Resolution	225kV / 300W / 200μm Resolution	320kV / 800W / 200μm Resolution (Optional - 190kV / 190W / 0.5μm Resolution)
Detector	Active Area	430mm X 430mm	430mm X 430mm
	Resolution	9.4MP	9.4MP
	Pixel pitch	140μm	140μm
Inspection Area	2D : 600mm X 800mm	2D : 300mm X 300mm	2D : 600mm X 800mm
	3D : 320mm X 520mm	3D : 300mm X 300mm	3D : 420mm X 400mm
X-ray Safety	1uSv/h		
Dimension (W X D X H, mm)	2,465 X 1,866 X 1,772	2,250 X 1,800 X 2,250	2,800 X 2,000 X 2,200
Weight (kg)	2,400	8,000	9,500

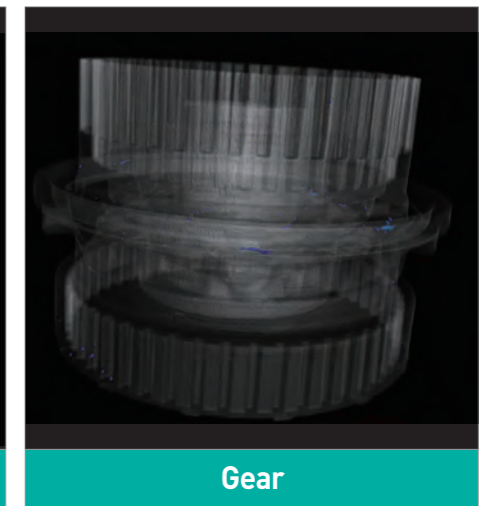
### Sample Images



Diecasting



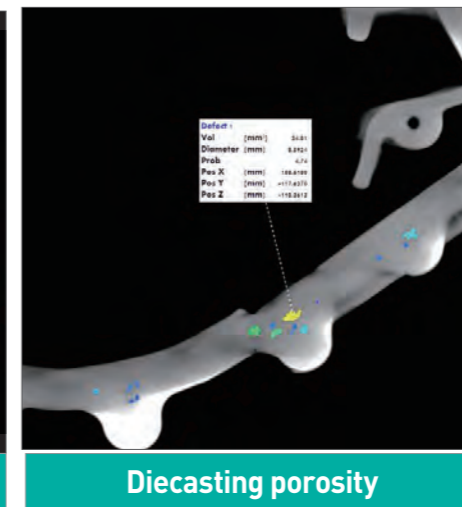
Motor



Gear



Diecasting



Diecasting porosity



casting

# Chip counter



Chip counter HAWKEYE2000



# Chip counter



HAWKEYE 2000

## Chip counter

### Equipment

HAWKEYE 2000

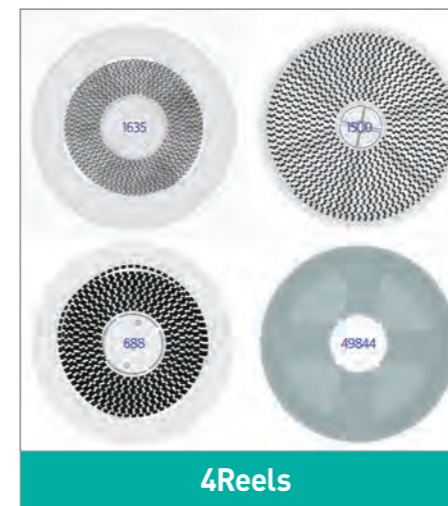
#### Automated X-ray Chip(Reel) Counter

- Simple and easy operation
- Counting accuracy over 99.9%
- High-speed counting within 6 seconds
- Supports MES / ERP integration
- Maintenance-free with automatic daily calibration

### Specification

Equipment	HAWKEYE 2000	
X-ray source	55kV / 110W / 200 $\mu$ m Resolution	
Detector	Active Area	430mm X 430mm
	Resolution	9.4MP
	Pixel pitch	140 $\mu$ m
Inspection Area	008004"(in) / 0201(mm)	
X-ray Safety	1uSv / h	
Dimension (W X D X H, mm)	900 X 1,481 X 1,947	
Weight (kg)	580	
User support mode	Auto Smart 4 Reels Mode, Cloud System, Black and White List, Barcode Selection, Wireless barcode scanner, Automatic barcode scanner	
Etc.	QR Code Scanner & Label Printer	

### Sample Images



4Reels



Tray



Tube



Tray

# KARAD

Korea Advanced Radiography Analysis Division

# Distributorship



**KARAD** (Korea Advanced Radiography Analysis Division)

**Distributorship** (Europe / Outside of Europe)

# KARAD

## Korea Advanced Radiography Analysis Division



### The first and only KOLAS-accredited testing laboratory in South Korea

The Korea Laboratory Accreditation Scheme (KOLAS), operated under the Ministry of Trade, Industry and Energy's Agency for Technology and Standards, is the official organization responsible for establishing national standards and certifying testing laboratories both domestically and internationally. Techvalley is the first and only KOLAS-accredited testing laboratory in South Korea specializing in X-Ray CT imaging.

As a KOLAS-accredited laboratory, Techvalley is authorized to issue test reports recognized in 104 countries worldwide. Additionally, we have established partnerships with various related organizations such as the Korea Testing Laboratory (KTL) and the Korea Association for Radiation Application (KARA), contributing to enhanced product quality and reliability for our clients.



### Korea Advanced Radiography Analysis Division

Following our accreditation as a KOLAS-certified testing laboratory, we established the Korea Advanced Radiography Analysis Division (KARAD). Equipped with high-power 600kV systems and Nano Tube technology, KARAD can inspect a wide range of samples from various industries.

The high-power 600kV equipment provides superior penetration, enabling inspection of large and dense samples such as die-casting parts, automotive components, and aerospace materials. Additionally, the dual Nano Tube and Micro Tube systems allow for precise defect detection, 3D volumetric analysis, and accurate measurements.

Our imaging quality, analyzed by highly skilled experts using cutting-edge technologies, is recognized worldwide for its excellence.

### Non-destructive CT scanning and analysis services

- Large automotive parts
- Precision scanning of secondary batteries and various components
- Detailed inspection of aircraft parts and missiles

### Ultra-small components (Nano scale)

- High-precision 3D CT measurement of ultra-small products
- Semiconductor wafer materials and packaging inspection
- Cosmetic material analysis and organic substance imaging





# Distributorship

## Europe



• **Scanditron** Sweden, Filand, Norway

Scanditron Sverige AB, Box 8064, 163 08 Spånga  
www.scanditron.com



• **Altus Group Ltd** UK, Ireland

Unit D, Crescent Trade Park Moons, Moat Drive, Redditch, Worcestershire, B98 9DZ, UK  
sales@altusgroup.co.uk / +44(0)1386 791 074 / altusgroup.co.uk



• **Danutek Hungary Kft** Hungary, Ukraine, Serbia

Hunyadi Janos utca 3., Building "A", H-1117 Budapest, Hungary  
sales@danutek.com / +361 273 04 57 / danutek.com

• **Danutek Balkans SRL** Romania, Bulgaria, Macedonia

Mitopolit Andrei Saguna 2, 300119 Timisoara, Romania  
office@danutek.com / +40 356 802 800 / danutek.com



• **SmartRep GmbH** Germany, Austria, Switzerland

Martin-Luther-King-Str. 2b D-63452 Hanau, Germany  
info@smartrep.de / +49(0)6181 440 87-50 / smartrep.de



• **CPS** Poland

CPS-IEP Sp. z o.o ul. Długa 47 82-500 MAREZA, POLAND  
office@cps.com.pl / +48 55 612 93 / cps.com.pl



• **KVMS** Belgium, Netherlands

Slachthuisstraat 30/3 2300 TURNHOUT BELGIUM  
info@kvms.be / +32 14 72 00 62 / www.kvms.be



Amtech

• **AMTECH, spol. s r. o** Czech, Slovakia

Hradištská 887, 687 08 Buchlovice, Czech Republic  
amtech@amtech.cz / +420 541 225 215 / amtech.cz



• **WIN-TEK SRL** Italy

Via Cristina Trivulzio di Belgioioso 28/30, 20852 Villasanta (MB)  
info@win-tek.eu / +39 039 691 9033 / win-tek.eu



• **FinallyBuzz** Portugal

Rua de Fundões 151, 3º Andar – Sala 3.7B, 3700-121 São João da Madeira, Portugal  
geral@finallybuzz.com / +351 256 001 989 / finallybuzz.pt



• **ANKATEK** Turkey

Yukarı Dudullu, Nebioğlu Sk. No:25, 34775 Dudullu Osb/Ümraniye/İstanbul  
+90216 471 72 46 / www.anka-tek.net

## Outside of Europe

• **Transtec** Singapore (TransTechnology Pte Ltd.)

Blk 207 Henderson Road #01-02/03-02 Henderson Industrial Park, Singapore  
+65 6296 1919 / www.trans-tec.com

• **Transtec** Malaysia (Transtech Malaysia Sdn. Bhd.)

1-2-56 Elit Avenue, Jalan Mayang Pasir 3 11950 Bayan Lepas Penang  
+604 641 5388 / www.trans-tec.com

• **Transtec** Thailand (TransTechnology Co., Ltd.)

202/22 Moo 4 Itthiporn Building Floor # 1 Chaengwattana Road, Talad Banghen, Laksi, Bangkok 10210, Thailand  
+66 2 973 3922-4 / www.trans-tec.com

• **Transtec** Vietnam (TransTechnology Pte Ltd. (Rep Office))

Floor 2, Ru Blue Building, 223 Doi Can Str, Ba Dinh Dist, Hanoi, Vietnam  
+84 24 3766 8152 / www.trans-tec.com

• **Transtec** India (TransTechnology India Pvt. Ltd.)

GF& 1F Industrial Building Bearing Site No. Q1/2 KSSIDC Ind. Est., 1st Cross Bommasandra Industrial Area, II Phase Jigani Link Road, Yarandahally Circle, Bengaluru  
+91 9845485937 / www.trans-tec.com

• **Transtec** China (TransTechnology International Trading (Shanghai) Co., Ltd.)

Room 731, 3U Mansion No. 8 Hua Jing Road Wai Gao Qiao Free Trade Zone Pudong, Shanghai P.R. China Postal Code: 200131  
+86 21 51331619 / www.trans-tec.com

• **KNK** Japan

Kamasashi, Asahi-shi, Chiba, Japan  
+81-479-60-2521 / www.knk-kk.jp

• **ASI-Tech** Israel

Netser-Sereni 70395, Israel  
+972-8-9208844 / www.asi-tech.co.il

• **Maxim (Pioneer SMT)** India

J9/15 DLF CITY PHASE- II, Gurgaon-122001, India  
+91 - 9958076012 / http://www.pioneersmt.com

• **SIP TECHNOLOGY (M) SDN BHD** Malaysia

36 Lorong IKS Bukit Tengah, Taman IKS Bukit Tengah 14000, Penang Malaysia  
+604 508 8318 / https://sip-technology.com

• **Suba Engineering** Australia

(Sydney) Unit 6/150 Canterbury Rd, Bankstown NSW 2200  
(Melbourne) :10/48 Shearson Crescent MENTONE VIC 3194

• **UNICMAQ BRASIL COMÉRCIO DE MAQUINAS E INSTRUMENTOS LTDA** Brazil

Rua Sao Miguel, 183 – Pinheirinho, Vinhedo – SP. 13289-330. www.unicbrasil.com.br

# Thank you



**TECHVALLEY co.,ltd.**

**Inquire +82-31-730-0825 / [www.techvalley.co.kr](http://www.techvalley.co.kr)**

- 
- **HQ** A-506 Keumkang Penterium IT Tower, 215, Galmachi-ro, Jungwon-gu, Seongnam-si, Gyeonggi-do, South Korea
  - **R&D Center** A-509 Keumkang Penterium IT Tower, 215, Galmachi-ro, Jungwon-gu, Seongnam-si, Gyeonggi-do, South Korea
  - **KARAD** A-B314 Keumkang Penterium IT Tower, 215, Galmachi-ro, Jungwon-gu, Seongnam-si, Gyeonggi-do, South Korea
  - **Factory 1** 33, Jikdong-ro, Gwanju-si, Gyunggi-do, South Korea
  - **Factory 2** 71-17, Jikdong-ro, Gwanju-si, Gyunggi-do, South Korea
  - **上海太科威利检测设备有限公司** 上海市 嘉定区沪宜公路1188号 27幢2层 213
  - **VINA Business Division** Au Co Street, Kinh Bac Ward, Bac Ninh City, Bac Ninh Province, Vietnam
-